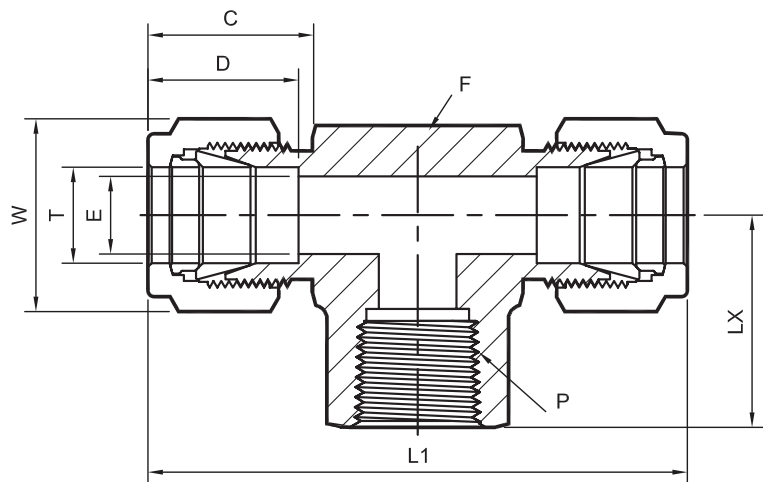
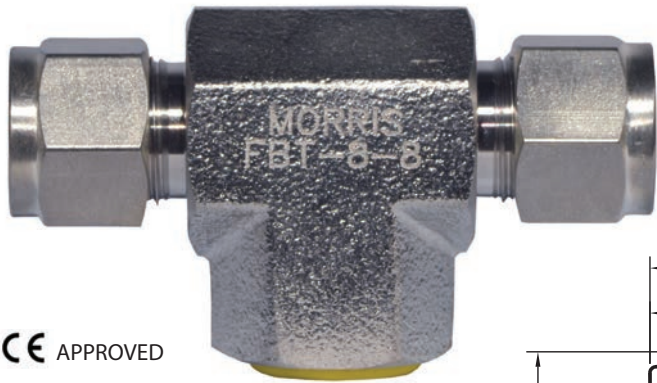


FBT TYPE

SIZE: 1/8" - 1"
 * END: Fractional tube x NPTF



Part Number	Equivalent P/N 1	Equivalent P/N 2	Tube OD ØT (INCHES)	NPT FEMALE PIPE SIZE P	ØE	D	C	L1	LY	Body Hex F	Nut Hex W
FBT-2-2	-200-3-2TTF	2FBT2N	1/8	1/8	0.09	0.50	0.60	1.94	0.75	9/16	7/16
FBT-3-2	-300-3-2TTF	3FBT2N	3/16	1/8	0.09	0.50	0.60	2.02	0.75	9/16	7/16
FBT-4-2	-400-3-2TTF	4FBT2N	1/4	1/8	0.19	0.60	0.70	2.12	0.75	9/16	9/16
FBT-4-4	-400-3-4TTF	4FBT4N	1/4	1/4	0.19	0.60	0.70	2.34	0.88	11/16	9/16
FBT-5-2	-500-3-2TTF	5FBT2N	5/16	1/8	0.25	0.64	0.76	2.34	0.75	5/8	5/8
FBT-6-4	-600-3-4TTF	6FBT4N	3/8	1/4	0.28	0.66	0.76	2.46	0.88	13/16	11/16
FBT-6-6	-600-3-6TTF	6FBT6N	3/8	3/8	0.28	0.66	0.76	2.62	0.88	13/16	11/16
FBT-6-8	-600-3-8TTF	6FBT8N	3/8	1/2	0.28	0.66	0.76	2.84	1.12	1-1/16	11/16
FBT-8-4	-810-3-4TTF	8FBT4N	1/2	1/4	0.41	0.90	0.86	2.84	0.88	13/16	7/8
FBT-8-6	-810-3-6TTF	8FBT6N	1/2	3/8	0.41	0.90	0.86	2.84	0.88	13/16	7/8
FBT-8-8	-810-3-8TTF	8FBT8N	1/2	1/2	0.41	0.90	0.86	3.06	1.12	1-1/16	7/8
FBT-10-8	-1010-3-8TTF	10FBT8N	5/8	1/2	0.50	0.96	0.86	3.06	1.12	1-1/16	1
FBT-12-12	-1210-3-12TTF	12FBT12N	3/4	3/4	0.62	0.96	0.86	3.52	1.25	1-3/8	1-1/8
FBT-14-12	-1410-3-12TTF	14FBT12N	7/8	3/4	0.72	1.02	0.86	3.52	1.25	1-3/8	1-1/4
FBT-16-12	-1610-3-12TTF	16FBT12N	1	3/4	0.88	1.23	1.04	3.86	1.25	1-3/8	1-1/2
FBT-16-16	-1610-3-16TTF	16FBT16N	1	1	0.88	1.23	1.04	4.22	1.50	1-11/16	1-1/2

NOTES:

- * The "E" dimension is the minimum opening.
- * Dimension "L1 & D" is shown in the finger-tight position.
- * NPT thread as per ANSI B1.20.1.

- * Dimensions are for reference only and are subject to change.
- * **All part numbers are proprietary of their respective owners**