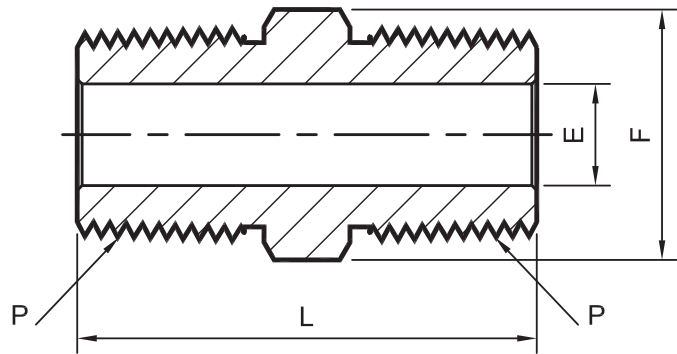


# HLN TYPE



SIZE: 1/8" - 1"  
\* END: Fractional tube x NPTF

CE APPROVED



Part Number	Equivalent P/N 1	Equivalent P/N 1	NPT FEMALE PIPE SIZE P	Body Hex F	ØE	L	LY
HLN - 1	-200-4	1 - 1 MHLN	1/16	7/16	0.12	XL	7/16
HLN - 2	-2-HLN-	2 - 2 MHLN	1/8	7/16	0.19	XL	7/16
HLN - 4	-4-HLN-	4 - 4 MHLN	1/4	9/16	0.28	XL	9/16
HLN - 6	-6-6HLN	6 - 6 MHLN	3/8	23/32	0.38	XL	23/32
HLN - 8	-8-HLN	8 - 8 MHLN	1/2	7/8	0.47	XL	7/8
HLN - 12			3/4	1 - 1/16	0.62	XL	1 - 1/16
HLN - 16			1	1 - 3/8	0.88	XL	1 - 3/8

**NOTES:**

- \* The "E" dimension is the minimum opening.
- \* Dimension "L1 & D" is shown in the finger-tight position.

- \* Dimensions are for reference only and are subject to change.
- \* **All part numbers are proprietary of their respective owners**