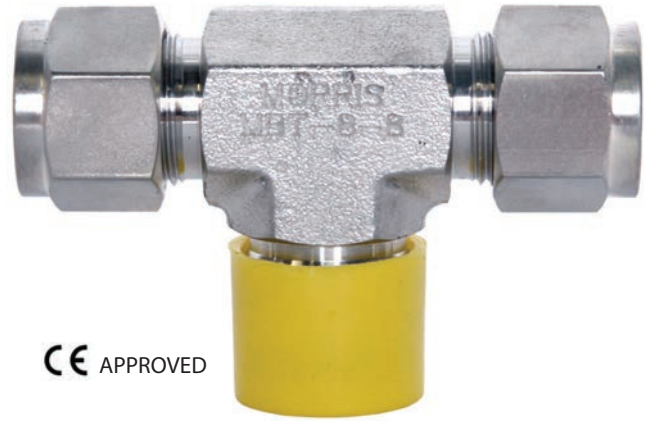
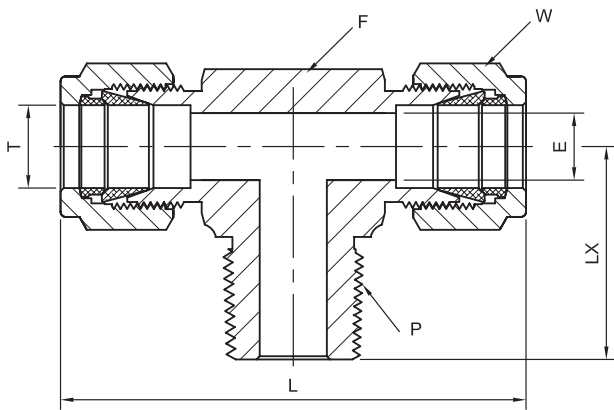


MALE BRANCH TEE

MBT TYPE

SIZE: 1/8" – 1"

* END: Fractional tube x NPT(M)



Part Number	Equivalent P/N 1	Equivalent P/N 2	Tube OD ØT (INCHES)	NPT FEMALE PIPE SIZE P	Body Hex F	C	ØE	D	LX	Nut Hex W	L1
MBT-2-4	-200-3-4TTM	2MBT4N	1/8	1/4	9/16	0.60	0.09	0.50	0.92	7/16	1.94
MBT-3-2	-300-3-2TTM	3MBT2N	3/16	1/8	9/16	0.63	0.12	0.54	0.70	7/16	1.92
MBT-4-2	-400-3-2TTM	4MBT2N	1/4	1/8	9/16	0.70	0.19	0.60	0.74	9/16	2.12
MBT-4-4	-400-3-4TTM	4MBT4N	1/4	1/4	9/16	0.70	0.19	0.60	0.92	9/16	2.12
MBT-5-2	-500-3-2TTM	5MBT2N	5/16	1/8	9/16	0.73	0.19	0.64	0.82	5/8	2.34
MBT-5-4	-500-3-4TTM	5MBT4N	5/16	1/4	9/16	0.73	0.19	0.64	1.01	5/8	2.34
MBT-6-4	-600-3-4TTM	6MBT4N	3/8	1/4	13/16	0.86	0.28	0.66	1.00	11/16	2.40
MBT-6-6	-600-3-6TTM	6MBT6N	3/8	3/8	13/16	0.76	0.28	0.66	1.11	11/16	2.62
MBT-8-6	-810-3-8TTM	8MBT6N	1/2	3/8	13/16	0.86	0.38	0.90	1.11	7/8	2.84
MBT-8-8	-810-3-8TTM	8MBT8N	1/2	1/2	13/16	0.86	0.41	0.90	1.30	7/8	2.84
MBT-10-8	-1010-3-8TTM	10MBT8N	5/8	1/2	1	0.86	0.47	0.96	1.41	1	3.06
MBT-12-12	-1210-3-12TTM	12MBT12N	3/4	3/4	1-1/16	0.86	0.62	0.96	1.45	1-1/8	3.14
MBT-14-12	-1410-3-12TTM	14MBT12N	7/8	3/4	1-3/8	0.86	0.62	1.02	1.50	1-1/4	3.52
MBT-16-12	-1610-3-12TTM	16MBT12N	1	3/4	1-3/8	1.04	0.62	1.23	1.66	1-1/2	3.88
MBT-16-16	-1610-3-16TTM	16MBT16N	1	1	1-3/8	1.04	0.88	1.23	1.84	1-1/2	3.88

NOTES:

* The "E" dimension is the minimum opening.

* Dimension "L1 & D" is shown in the finger-tight position.

* Dimensions are for reference only and are subject to change.

* **All part numbers are proprietary of their respective owners**

