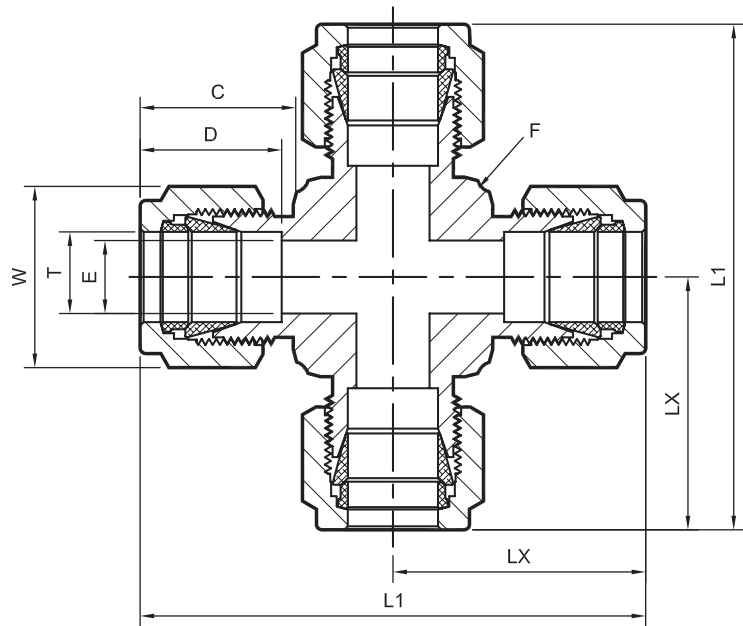
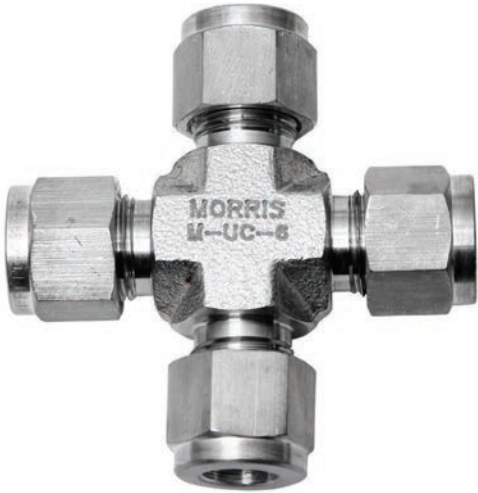


# UCF TYPE

SIZE: 1/16" – 1"  
\* END: Fractional tube (OD)



CE APPROVED

Part Number	Equivalent P/N 1	Equivalent P/N 2	LX	Tube OD ØT (INCHES)	ØE	Body Hex F	C	L	D	Nut Hex	
										W	L1
UCF - 2	-200-4	2ECR2	0.62	1/8	0.09	7/16	0.60	1.24	0.50	7/16	1.76
UCF - 3	-300-4	3ECR3	0.66	3/16	0.12	7/16	0.86	1.38	0.54	7/16	1.92
UCF - 4	-400-4	4ECR4	0.77	1/4	0.19	9/16	0.70	1.54	0.60	9/16	2.12
UCF - 5	-500-4	5ECR5	0.88	5/16	0.25	5/8	0.73	1.76	0.64	5/8	2.34
UCF - 6	-600-4	6ECR6	0.91	3/8	0.28	13/16	0.76	1.82	0.66	11/16	2.40
UCF - 8	-810-4	8ECR8	1.02	1/2	0.41	13/16	0.86	2.04	0.90	7/8	2.84
UCF - 10	-1010-4	10ECR10	1.03	5/8	0.50	1.00	0.86	2.06	0.96	1.00	2.86
UCF - 12	-1210-4	12ECR12	1.17	3/4	0.62	1-1/16	0.86	2.34	0.96	1-1/8	3.14
UCF - 14	-1410-4	14ECR14	1.36	7/8	0.72	1-3/8	0.86	2.72	1.02	1-1/4	3.52
UCF - 16	-1610-4	16ECR16	1.45	1	0.88	1-3/8	1.04	2.90	1.23	1-1/2	3.86

**NOTES:**

- \* The "E" dimension is the minimum opening.
- \* Dimension "L1 & D" is shown in the finger-tight position.

- \* Dimensions are for reference only and are subject to change.
- \* **All part numbers are proprietary of their respective owners**