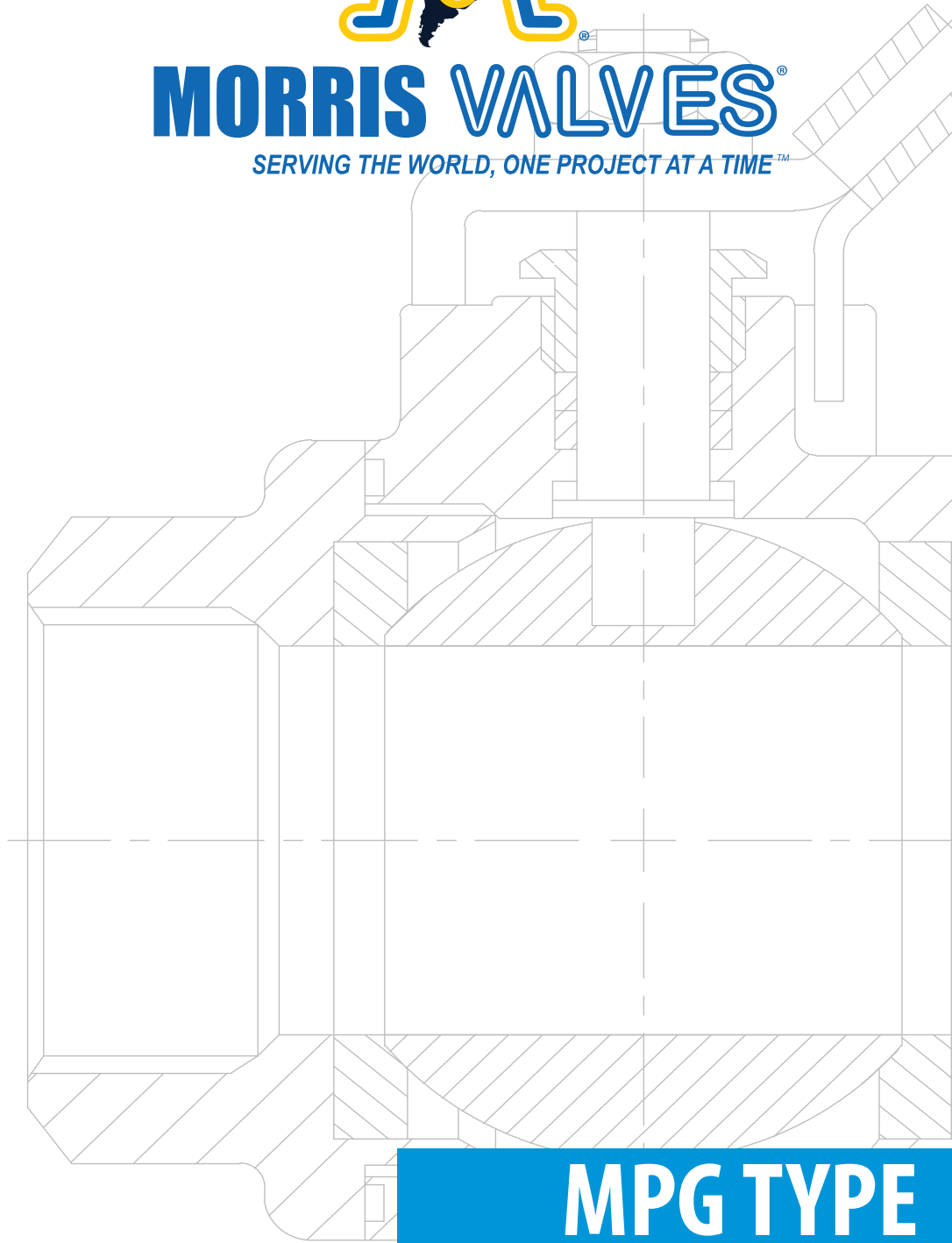




**MORRIS VALVES®**

*SERVING THE WORLD, ONE PROJECT AT A TIME™*



**MPG TYPE**

[www.morrisvalve.com](http://www.morrisvalve.com)



In 1984, our journey into the business of repairing valves and industrial instrumentation began. That journey has led us to represent and service well known American brands and companies. In early 2000, our experience and growing passion for the valve industry encouraged our decision to launch our own brand, Morris Valves. Starting with the highly requested Ball Valves, the brand has been based on the principal of quality and performance to match our customers' needs. Our high standards of production later lead us to incorporate other models such as Gate Valve and Check Valves to our production. These additions were carefully selected to match our Standard of Quality. Our success has been driven by our belief of "Tradition with Quality" in everything we do. Our products are developed with that belief which drives our growth and guides the service we provide to our customers.

Our vision is to be amongst the leading corporations in the supply of goods and services related to valves, their components and industrial equipment in general. We want to conquer new markets in conformity with international standards and remain committed to customer satisfaction, the welfare of our company and the sustainability of our planet.

## Mission

Our mission is to use our highly trained, highly focused, and extremely motivated staff to work with manufacturers who value quality and have the vision for new development and product applications to ensure the timely provision of goods and services related to valves, their components and industrial equipment in general. We maintain a rigorous standard of customer satisfaction, which will provide for the welfare of the company, the welfare of the countries we serve, and most importantly the sustainability of the planet.

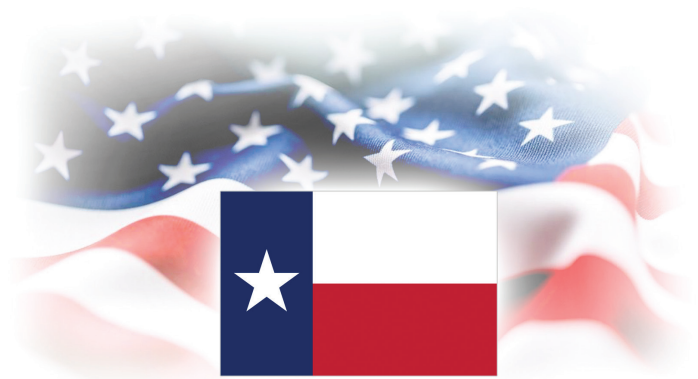
## Contacts

**Address:** 6803 Theall Rd Building B, Houston, Tx 77066

**Telephone:** +1 (832) 666-5576

**Cel:** +1 (832) 983-0744

**Email:** sales@morrisvalve.com



## Vision

*"Serving the world, one project at a time"*

# United States of America

United States Patent and Trademark Office

## MORRIS VALVES

**Reg. No. 5,462,890**

**Registered May 08, 2018**

**Int. Cl.: 7**

**Trademark**

**Principal Register**

MORRIS VALVES, INC. (FLORIDA CORPORATION)  
5590 N.w. 84th Ave.  
Miami, FLORIDA 33166

CLASS 7: Valves being parts of machines; Valves as machine components; Butterfly valves being parts of machines; Gate valves being parts of machines; Plug valves being parts of machines; Globe valves being parts of machines

FIRST USE 00-00-2010; IN COMMERCE 00-00-2010

THE MARK CONSISTS OF STANDARD CHARACTERS WITHOUT CLAIM TO ANY PARTICULAR FONT STYLE, SIZE OR COLOR

OWNER OF U.S. REG. NO. 4840307, 4241184, 4241186

No claim is made to the exclusive right to use the following apart from the mark as shown:  
"VALVES"

SER. NO. 87-575,517, FILED 08-18-2017



*Andrei Iancu*

Director of the United States  
Patent and Trademark Office

# MPG TYPE

Process gauges according to US standard

**-Range (ASME B40.100)**

Vacuum 0-15psi

Pressure:0 - 60000psi/bar

**-Nominal Case Size (NCS):** 4 1/2"

**-Application**

For gaseous and liquid, aggressive media that are not highly viscous and do not tend to crystallize, especially for chemical and oil-processing industries.

**-Accuracy (ASME B40.100)**

Grade 2A ( $\pm 0.5\%$  of span)

Grade 1A ( $\pm 1\%$  of span) for pressure ranges

$\geq 0 - 15,000$  psi

**-Case**

With screw ring, PBTP (thermoplastic) black, flame-retardant and impact resistant, fire classification UL 94 V-0, case with integrated back flange for surface mounting

**-Degree of Protection**

(ANSI/IEC 60529-2020) IP65

**-Blow-out Device**

Blow-out back; when pressure increases in the case, the entire case back separates, allowing full relief

**-Case Ventilation**

Without ventilation, but with internal pressure compensation via pressure equalizing membrane

**-Case Filling**

Glycerin

**-Temperature Influence**

In accordance with the ASME standards, the additional error per  $28\text{ }^{\circ}\text{C} / 50\text{ }^{\circ}\text{F}$  temperature deviation from the reference temperature

$+20\text{ }^{\circ}\text{C} / +68\text{ }^{\circ}\text{F}$  can be up to  $\pm 1\%$ .

**-Window**

Laminated safety glass

**-Movement**

Stainless steel

**Dial**

Aluminum white, scale black

**Wetted Parts**

**Connection**

1/2"MNPT lower mount (LM)

9/16-18UN for 15000psi to 60000psi

\* 316L stainless steel



CE APPROVED

**Bourdon tube**

\* 16L stainless steel gas-shielded arc welding

$\leq 600$  psi / 40 bar C-form

$\geq 800$  psi / 60 bar helical form

**Pointer**

Adjustable pointer, aluminum black, with aluminum mechanism

**Safety Category**

Safety version (similar to DIN EN 837-1, S3)

with break-proof solid

front between measuring system and dial and

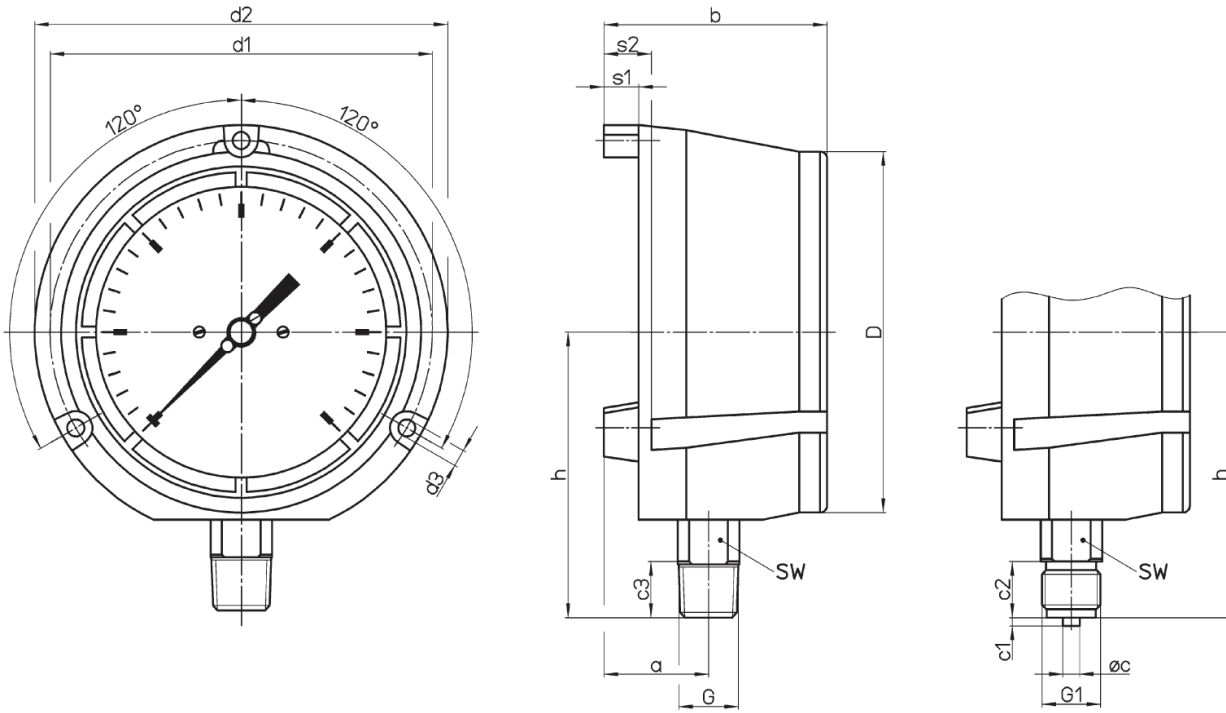
with blow-out back.

When pressure increases in the case, the entire case back separates, allowing full relief.

Option:

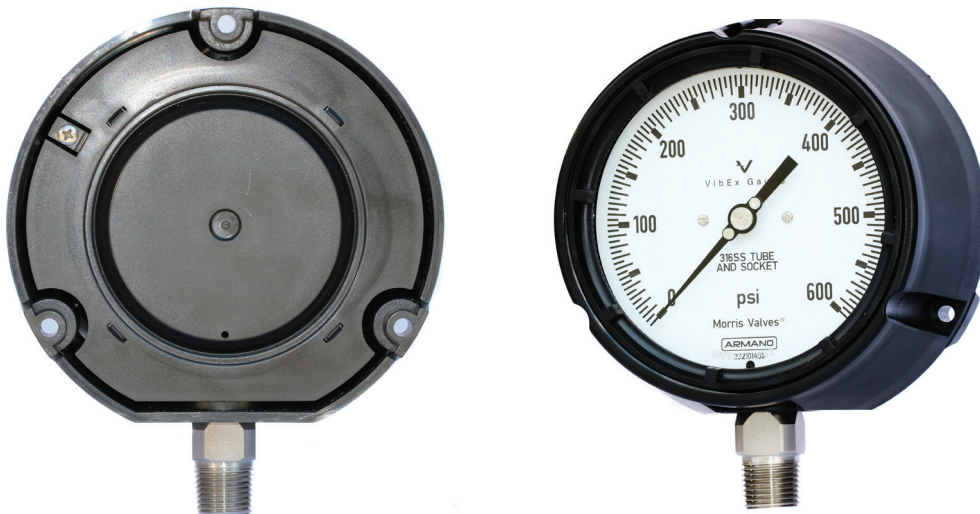
Diaphragm seal assembly (DSA)





Dimensions (mm/inch) Kg/Lb

NCS	a	b	c	c1	c2	c3	D	d1	d2	d3	G	G1	h	s1	s2	SW	Wt
4-	38	80	6	3	20	19	129	137	148	6.1	1/2" NPT	G 1/2 B	102	12,5	17	22	0.85
1/2"	1.5	3.15	0.24	0.12	0.79	0.75	5.08	5.39	5.83	0.24		1/2" BSP	4.02	0.49	0.67	0.87	1.87





*A Tradition of Quality*

*Our passion is to develop  
solutions for difficult situations in  
Industrial Applications, no matter  
how large or small the project.*

*"Serving the world, one project at a time"*

